



## CrowPi-L Raspberry Pi Laptop USER MANUAL

Please read this manual carefully before use, and retain it for future reference.

© ELECROW All Rights Reserved.

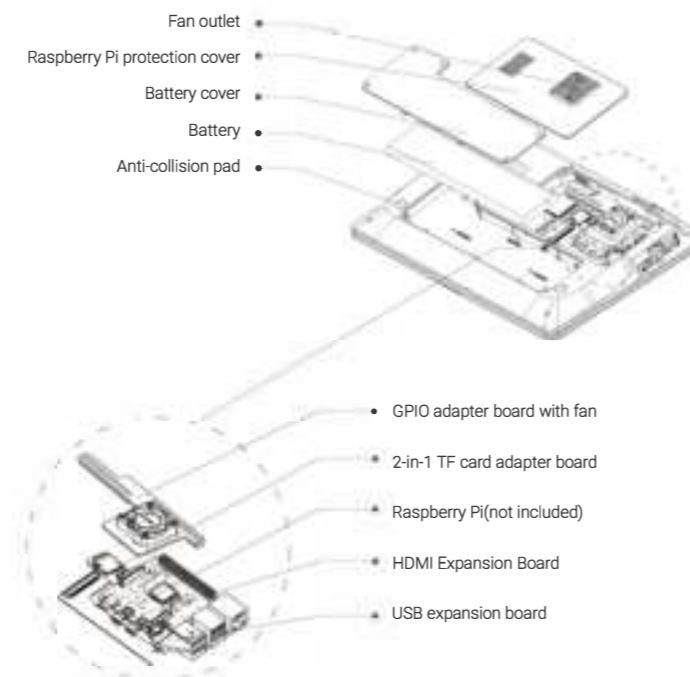
www.elecrow.com

### ⚠ IMPORTANT SAFETY WARNING!

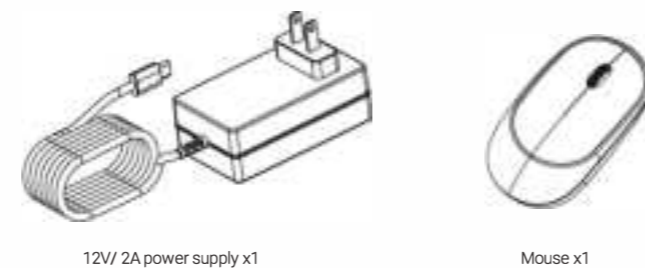
- This appliance can be used by children aged from 8 years and above and persons with reduced physical, sensory or mental capabilities or lack of experience and knowledge if they have been given supervision or instruction concerning use of the appliance in a safe way and understand the hazards involved.
- Children shall not play with the appliance.
- Cleaning and user maintenance shall not be made by children without supervision.
- **WARNING:** Use the detachable supply unit provided with this appliance only.

## Main parameters

### • A. Structure



### • B. Conventional accessories



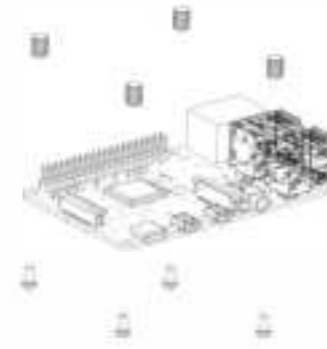
## Contents

Product introduction .....	01
Main features .....	01
Main parameters .....	02
• A. Structure .....	02
• B. Conventional accessories .....	03
How to use .....	04
• Install Raspberry Pi and Boot .....	04
• Use of Power .....	07
• Use of Camera and Microphone .....	07
• Use of Wireless Mouse .....	07
• Use of Touchpad .....	07
• Connect to the Network .....	07
• Screen Brightness Adjustment .....	07
• Charging and Battery .....	07
• Dual System Switch .....	07
• Support External Storage .....	07
• Use of Expansion Screen .....	08
• Use of Headphone / Speaker .....	08
• Use of GPIO Port .....	08
FAQ .....	09
Precautions .....	09
Specification .....	10
Customer Service .....	11

## How to use

### • Install Raspberry Pi and boot

1. Install magnets for Raspberry Pi which will be installed in the laptop.



After the installation is complete:



2. Insert the 2-in-1 TF card adapter board into the TF card slot on the back of the Raspberry Pi



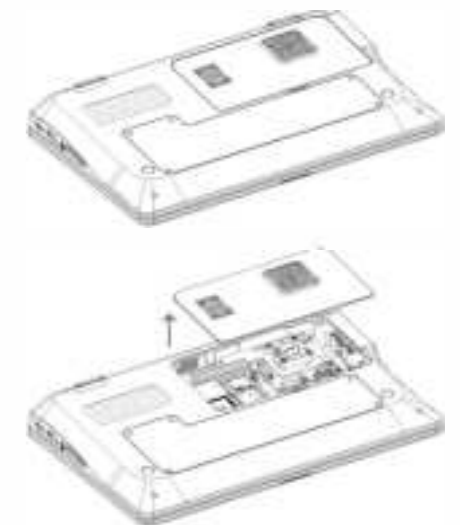
## Product Introduction

CrowPi-L is a lite version born out of CrowPi2, "L" stands for Lite, Light, and Laptop. This is a real Raspberry Pi computer. We collected a lot of opinions from CrowPi users and Raspberry Pi enthusiasts, focusing on solving many inconveniences of using Raspberry Pi DIY laptops, such as installing Raspberry Pi, switching system, heat dissipation, expanding screens, etc. Better yet, we still retain the highlights of the CrowPi series, built-in course system. Users will have a new experience bringing by Crowpi-L.

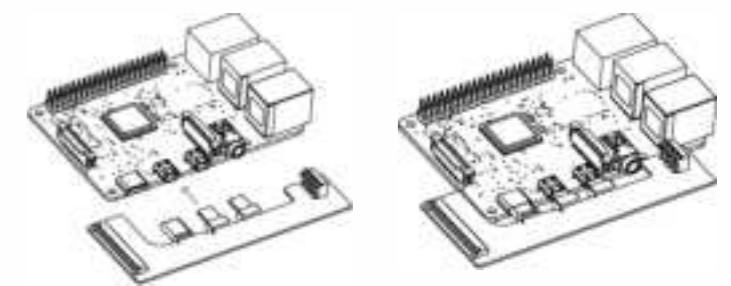
## Main features

1. 11.6-inch 1366\*768 IPS screen, sleek body made out of environmentally-friendly material, portable and delicate.
2. Come with keyboard and touchpad, which are the assistant for using Raspberry Pi.
3. Built-in fan and air circulation cooling system designed to protect the smooth operation of the Raspberry Pi system.
4. 40 pin expansion Raspberry Pi pin, allow users to connect the onboard sensor or output independently, which can help build Raspberry Pi projects faster and enables more creative usage.
5. 2 megapixels camera which is integrated with microphone, and also equipped with stereo output speakers.
6. The Type-c interface supports 9-20V wide voltage input, and a built-in 5000 mAh battery, which supports the device to work independently for more than three hours, and the software synchronously displays the battery power status.
7. The HDMI expansion port can be used to connect an external monitor, and the audio expansion port allow headphone or speaker to be connected.
8. Equipped with self-developed learning software, customized UI that is more suitable for traditional computer users, making software and hardware programming learning easier and more convenient.
9. Unique dual system switching function and extended storage function.

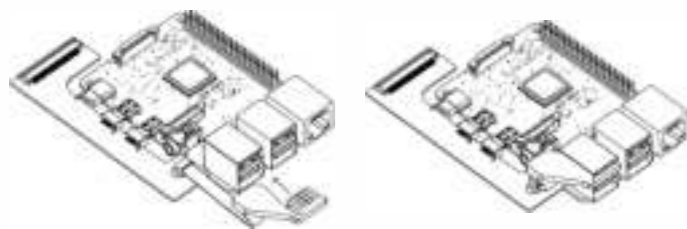
3. Open magnetic protection cover of Raspberry Pi



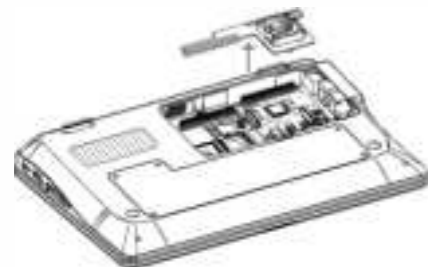
4. Install HDMI expansion board



5. Insert one end of the 4 pin cable into the socket of USB expansion board, the other one insert into the socket on the HDMI expansion board.



6. Put the assembled raspberry pi into the raspberry pi storage compartment, there is a magnetic base at the bottom of the compartment to fix the Raspberry Pi, Then press the GPIO adapter board with fan from top to bottom to connect the 40 pins on both sides.



7. Take out the 12V/2A type-c power adapter and insert it into the right type-c interface.



8. Press the power button at the top of the keyboard to start using.

06

## Specifications

Model	CrowPi-L
Size	291(Length)*190(Width)*46(Height)mm
Weight	1.1kg
Screen	11.6 inch 1366*768 IPS screen
Camera	2 megepixels camera with microphone
Power Supply	DC 12V 2A
Power Connector	USB-C interface
Keyboard	Built-in USB keyboard
Touchpad Function	Support
Mouse	2.4G mouse
Audio Output	Stereo speakers
Volume Adjustment	Support
Screen Brightness Adjustment	Support
Induction Screen Function	Support
External Storage	Support
Extended Screen Function	Support
Audio Output Interface	3.5MM headphone jack
Equipment Compatible	Raspberry Pi 4B
Dual System Function	Support
Support Operating System	Raspbian, Ubuntu, CentOS, Windows IOT, Kail, Pidora, ArchLinux, FreeBSD, Kodi, OpenWrt, RISC OS, RetroPie, LAKKA, Recalbox, LibreELEC, OSMC
Certification	CE FCC Rohs

10

### • Use of Power

Use the 12V power supply in the accessories and insert the type-c connector into the DC12V power supply port.

### • Use of camera and microphone

Connect camera and microphone via USB, if there is abnormal, you need to first check whether the USB adapter is properly connected in the fifth step of the "Raspberry Pi Installation and Booting" operation guide.

### • Use of wireless mouse

1. Take out the wireless receiver in the mouse compartment.
2. Insert the receiver into the USB port of the Raspberry Pi.
3. Turn on the power of the mouse to start normal use (Note: Your operation should follow the order above, don't turn on the power first).

### • Use of touchpad

When CrowPi-L is working normally, press **FN+F1** to unlock the touchpad for normal use, and press **FN+F1** again to disable the touchpad function.

### • Connect to the network

Insert the network cable into the network port of the Raspberry Pi or turn on the wireless network switch to connect to the wireless network.

### • Screen brightness adjustment

When CrowPi-L is working normally, press **F9** to decrease the brightness and press **F10** to increase the brightness.

### • Charging and battery

When using the type-c power supply, the battery can be charged. It takes 3 hours to fully charge the battery when it is not working. After being fully charged, it can support the device to work continuously for 3 hours.

### • Dual system switch

The self-developed dual-system switching adapter board allows two TF cards to be inserted at the same time, and users can quickly switch the system through the switch on the switching board (Note: Switch operation need to do when machine is turned off, and turn on the laptop after switching successfully).

07

## Customer Service

If you have any questions, customer support is always stand by.

- 12-Month Limited Warranty
- Lifetime Technical Support
- techsupport@elecrow.com
- +86 0755-23204330

@SteamCrowpi @CrowPi2 @Elecrow

11

### • Support external storage

The product provides an independent memory card interface, and users can connect an external memory card to expand the memory capacity.

### • Use of expansion screen

CrowPi-L has set aside a standard HDMI interface for customers to use the expansion screen. (Note: Affected by the Raspberry Pi 4B hardware, the expansion screen needs to be connected to the HDMI cable and screen before the Raspberry Pi is turned on, and the expansion screen can be used normally after turning on the device.)

### • Use of headphone/speaker

Compatible with headphones or speakers with 3.5mm interface

### • Use of GPIO port

We specially designed the GPIO port adapter board for CrowPi-L. After the user plugs in the adapter board, the Crowtail series sensor can be connected externally, and users can learn software and hardware knowledge through our tutorials.

#### Connection steps:

- Step 1. Connect the cable to the shield board



- Step2. Insert the other end of the cable into the GPIO slot on the side of the laptop



08



Information on the disposal for Waste Electrical & Electronic Equipment (WEEE). This symbol on the products and accompanying documents means that used electrical and electronic products should not be mixed with general household waste. For proper disposal for treatment, recovery and recycling, please take these products to designated collection points where they will be accepted on a free of charge basis. In some countries you may be able to return your products to your local retailer upon the purchase of a new product. Disposing of this product correctly will help you save valuable resources and prevent any possible effects on human health and the environment, which could otherwise arise from inappropriate waste handling. Please contact your local authority for further details of your nearest collection point for WEEE.

12

## FAQ

### 1. Unable to boot

Make sure you are using the correct charger and you inserted the SD card into the Raspberry Pi

### 2. The wireless mouse cannot be used

Please ensure that the battery is sufficient and the wireless receiver has been inserted into the USB port of the Raspberry Pi

### 3. The touchpad cannot be used

Please confirm that the touch function (keyboard touch function switch: FN+F1) is turned on

### 4. The screen is black and freezes

Please check whether the high-current peripherals were mounted and led to insufficient power supply. It may also be due to standby caused by long periods of non-use, use a touchpad or keyboard to wake up

### 5. The camera and microphone do not work

The USB adapter connection is unstable, please re-plug

### 6. Unable to connect to the network

Please turn on the wireless network or connect to the Raspberry Pi Ethernet port.

## Precautions

- Do not use it in humid environment
- Do not use an unsuitable power supply for our device
- Do not charge the battery for a long time
- Keep away from fire
- Do not bend the screen

09

Manufacturer: Shenzhen Elecrow Technology Development Co., Ltd.  
Address: 5F, Fengze Building B, Nanchang Huafeng Industrial Park, Baoan District, Shenzhen, China,  
Online support: www.elecrow.com

